

Fixture products

produced by Pearlite Fixture Group Inc.



### Contact Information

Head Office: Pearlite Fixture Group Inc.  
7313 Meadow Avenue  
Burnaby, British Columbia  
V5J 4Z2 Canada

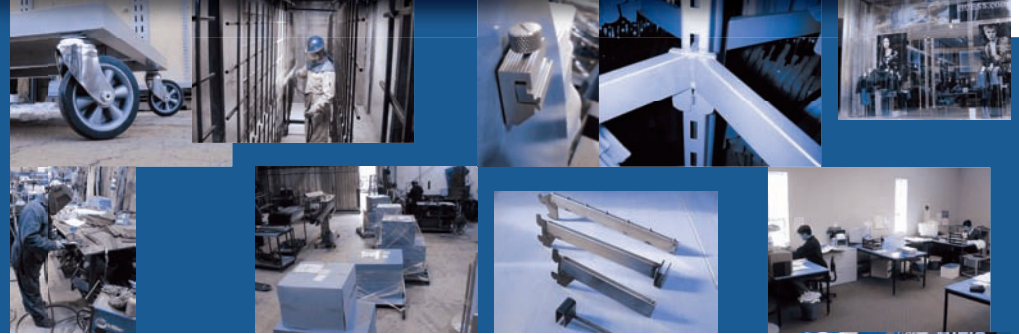
Telephone: (604) 434-9555  
Fax: (604) 434-9585  
Web: [www.pearlite.com](http://www.pearlite.com)  
E-mail: [info@pearlite.com](mailto:info@pearlite.com)

Representatives: Call for the location and contact information for  
an Authorized Pearlite Representative in your area.



PEARLITE  
FIXTURE  
GROUP  
INC.

Fixture products  
produced by Pearlite Fixture Group Inc.



## Why Retailers Choose Pearlite

### **Economical Operations**

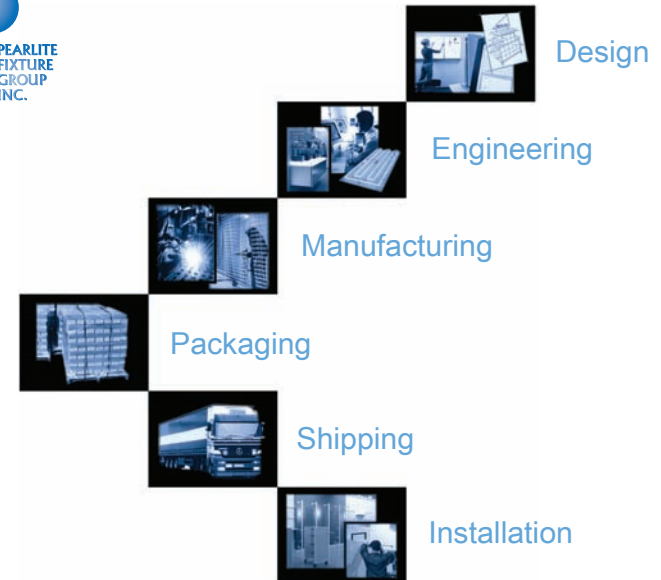
*With facilities in Vancouver, Shanghai and Southeast Asia, Pearlite offers the best value for your project. Pearlite is one of the few North American companies that have established woodworking and metal facilities in both their domestic and overseas operations. Whether it be electrical, custom laminating or whatever the need be, Pearlite determines the most economical solution for manufacturing. Inspection and control of the final assembly is maintained, as all final product ships out of their Vancouver factory. The bottom line is the bottom line.*

### **In-house Design**

*An in-house design department employing professional Industrial Designers works closely with customers while developing their ideas into working solutions. Offering design assistance to retailers is considered to be just part of being a full service store fixturing manufacturer.*

### **Customer Service**

*Pearlite Fixture Group Inc. has remained a key store fixturing vendor for some of the largest retailers in the world. The emphasis on customer service is a prime reason why this detail-oriented manufacturer has acquired and maintained such a high-profile customer base.*





### **Fixture Products Catalog**

*Pearlite's product catalog is a visual resource on a wide variety of display products and ideas. It provides well organized examples of fixtures and components that have been designed for contemporary retail environments.*

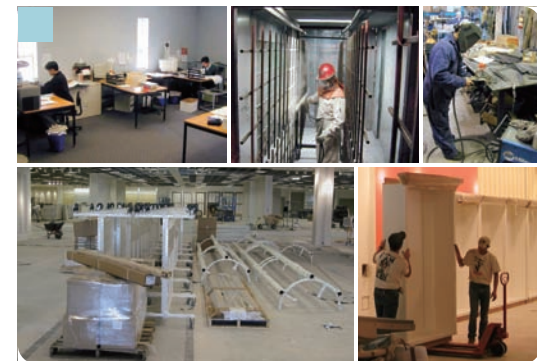
*Each item has a corresponding reference number. By quoting this number we can send you details and pricing, depending on your estimated quantities and time line.*

*As Pearlite does not stock any of the items shown, these products can be adjusted to your exact specifications, including size, colour, finish, materials and other unique requirements.*

### **Company Description**

*Pearlite Fixture Group Inc. is a custom store fixture designer, manufacturer and installer, founded in 1993.*

*Pearlite has a diverse portfolio throughout the United States and Canada. Its Vancouver, BC and overseas facility are equipped to handle the manufacture of store fixturing programs through a wide range of complexity and scope.*





INDEX

- 01 COMPANY DESCRIPTION
- 05 INDEX

APPAREL DISPLAY

- 7 PERIMETER FIXTURES
  - 7 FLOOR MOUNT
    - Slotted Outrigger
    - Double Slotted Upright
    - Puck System
  - 11 WALL MOUNT
    - Reverse Slotted Upright
    - Ladder
    - Concealed Standards
    - Hidden Support Structure
  - 15 CEILING MOUNT
    - Trapeze Bar
    - Hanging Rods

- 17 FLOOR FIXTURES
  - 17 RACKS & GONDOLAS
    - T - Rack
    - I - Rack
    - H -Rack
    - 4 -Way
  - 21 FULL HEIGHT FIXTURES
    - Full Height Racks
    - Towers
    - Floor Stands
  - 25 TABLES
    - Display Table
    - Nested Tables
    - Select Tables
    - Tiered Tables

SPECIALTY DISPLAY

- 31 ACCESSORY DISPLAY
  - Shoe Display
  - Fashion Accessory Display
  - Product Spinner
- 39 KIOSKS
  - Outdoor Kiosk
  - Themed Kiosk
  - Generic Kiosk
- 37 SIGN & INFO DISPLAY
  - Table Top Sign Holder
  - Floor Standing Sign
  - Information Display

COSMETIC & JEWELRY DISPLAY

- 41 SHOWCASE SYSTEMS
  - Standard Half Glass
  - Standard Full Glass
  - Custom Case Systems
  - Standard Case Modules
- 45 VITRINES & SINGLE CASES
  - Jewelry Vitrine
  - Cosmetic Vitrine
  - Tower Vitrine
- 48 TABLE TOP JEWELRY
  - Adjustable Display
  - Necklace Display
  - Earring Display
- 49 MOBILE CARTS
  - Cosmetic Carts
  - Display Carts

RETAIL SPACE ESSENTIALS

- 51 CASH WRAPS
  - Universal
  - Boutique
  - Department
  - Specialized
- 55 MIRRORS
  - Adjustable
  - Leaning
  - Oversize
  - 3 - Way
- 57 FIXED SIGNS & DECOR
  - Column Wraps
  - Illuminated Fixtures
  - Store Identity
  - Decorative Hanging
- 59 FITTING ROOMS
  - Extrusion Framed
  - Permanent Wall
  - Room Hardware

PROJECT GALLERY

- 61 UNIVERSITY BOOKSTORE
- 65 CHILDREN'S DEPARTMENT
- 69 FERRY LINE GIFT STORES